



# DH2i DxEnterprise 21.0 Software: Azure Marketplace Image for Windows Quick Start Guide

## DH2i Company

Support: +1 (800) 380-5405 ext. 2

<https://dh2i.com/support/>

eFax: +1 970-295-4505

Email: [support@dh2i.com](mailto:support@dh2i.com)

<https://www.dh2i.com>

## Azure Marketplace Image for Windows

This quick start guide describes how to configure DH2i's bring-your-own-license (BYOL) and pay-as-you-go DxEnterprise Windows images available on Azure. Using this guide, the user will configure DxEnterprise on two servers (nodes) and join the second node into a cluster.

### Prerequisites

- An Azure Virtual Machine (VM) with DxEnterprise pre-installed. To create a DxEnterprise VM using a Marketplace Image, visit the Azure Marketplace and search for "DxEnterprise."
- A second DxEnterprise VM is required for joining two nodes into a cluster.

### Configure Server

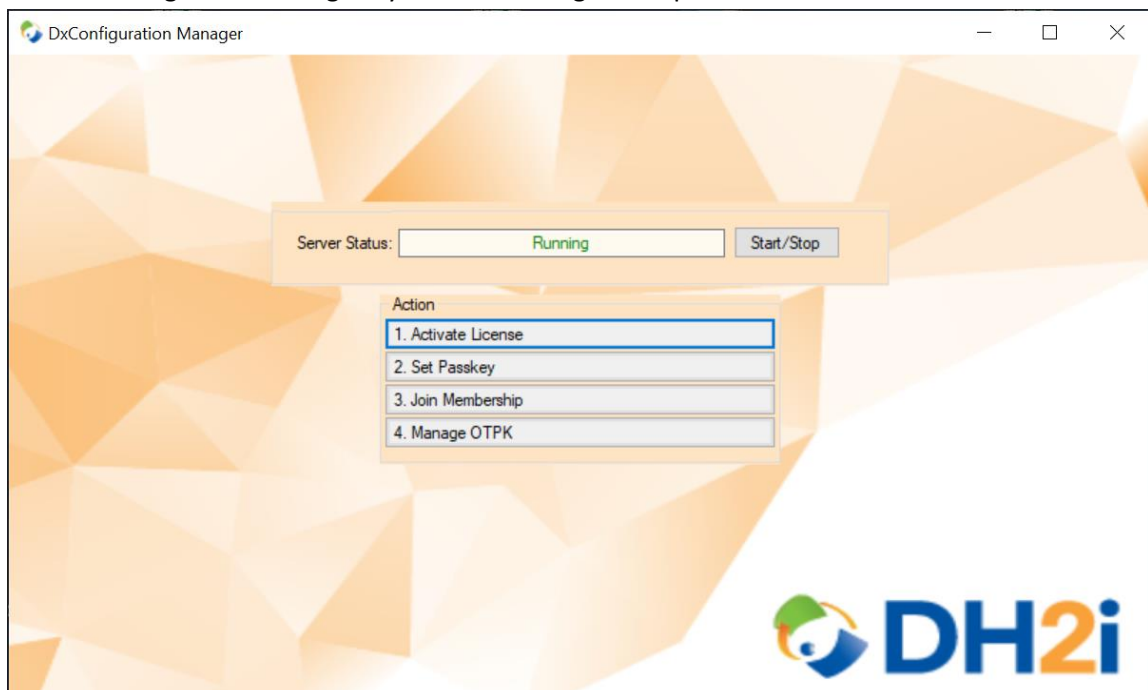
1. Ensure the VM is up-to-date using Windows Update or sconfig.
2. Ensure the server hostname is set and unique.
3. Run the **DxEnterprise Setup** shortcut on the desktop to start DxEnterprise services.

### Configure DxEnterprise Using DxConfiguration Manager

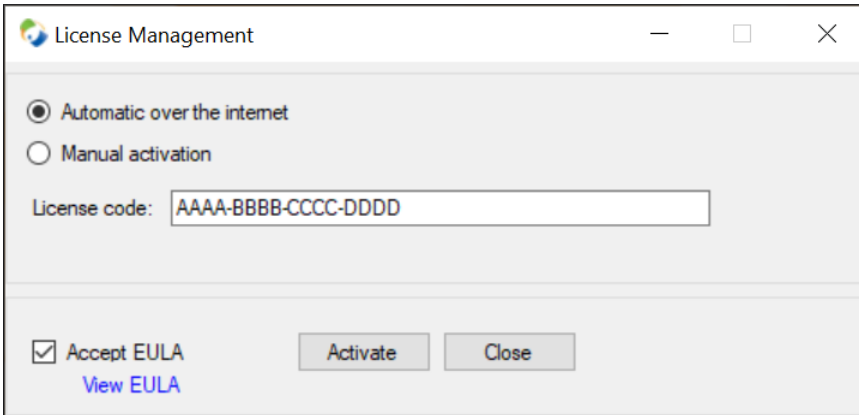
DxConfiguration Manager a client tool used to configure first-time DxEnterprise installations on Windows. After the configuration is completed, administrators can use DxEnterprise's management UI, DxAdmin, for cluster management.

Only complete step 2 if the user has their own license (BYOL). Pay-as-you-go users do not need to manually activate and may skip step 2.

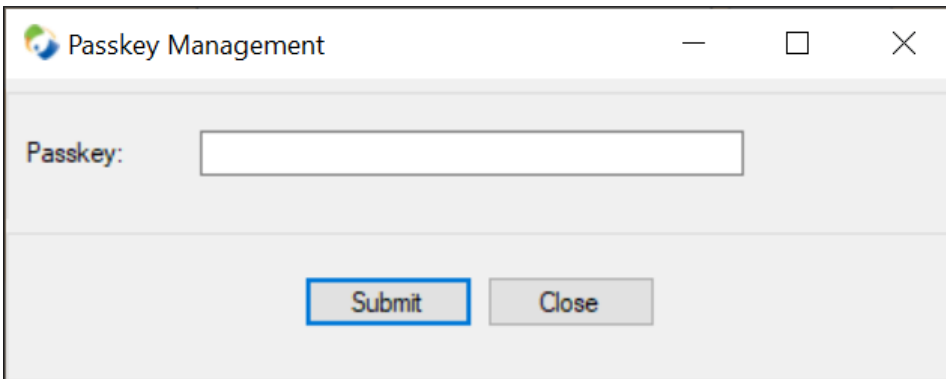
1. Start DxConfiguration Manager by double-clicking desktop shortcut.



2. (BYOL images only) At the main screen, click **Activate License**.

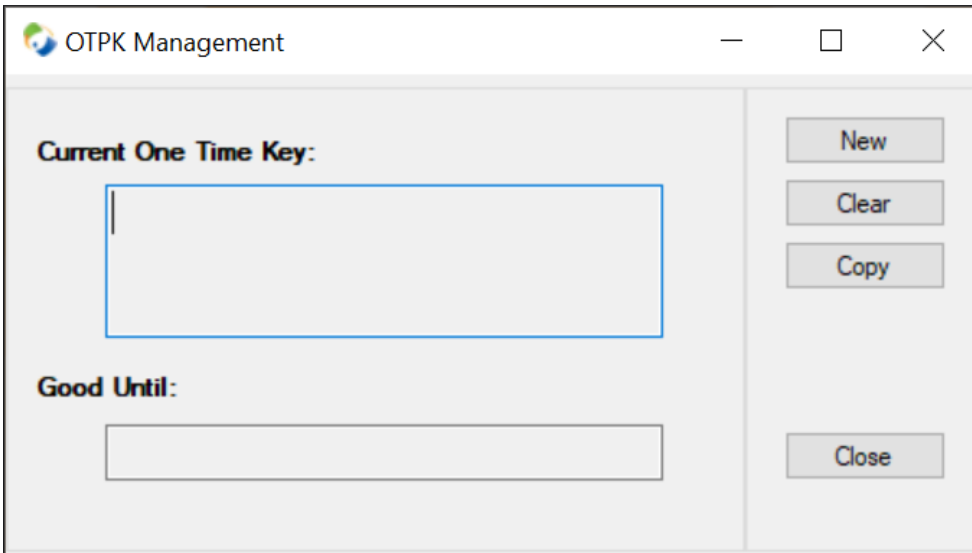


- a. In the “License Management” window, enter the DxEnterprise license key (including dashes) in the license code box, check the **Accept EULA** box, and click **Activate**.
  - b. After the server successfully activates, close the “License Management” window to return to the main menu.
3. Click **Set Passkey** to open the “Passkey Management” window.

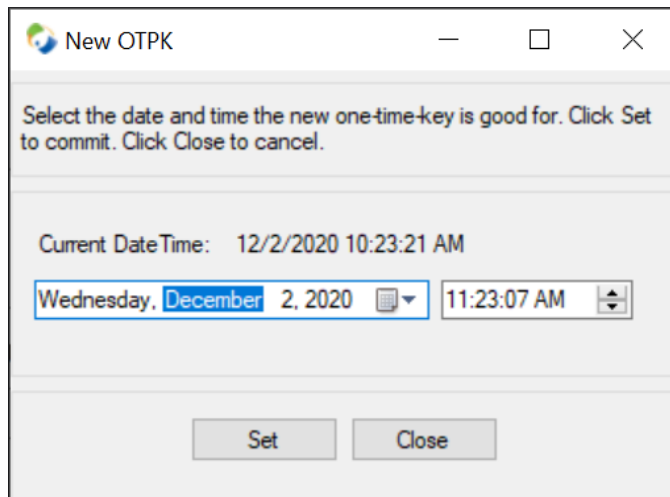


- a. Enter a passkey for the cluster and click **Submit**.
  - b. After the passkey is successfully set, select **OK** to return to the main menu.
4. OPTIONAL: DxEnterprise can utilize NAT matchmaking to easily connect servers across the internet. Click **Manage OTPK** to set a One-Time PassKey for the cluster that can be used by other nodes to join the cluster via NAT.

***NOTE:*** *To use this feature, the license must have NAT enabled; pay-as-you-go Marketplace images come with NAT. For BYOL users wanting to inquire about license status, visit [DH2i's Client Portal](#).*



- a. Click **New** and a window will appear for setting the expiration time of the OTPK.



- b. Choose a time and date for expiration, then click **Select** to generate the OTPK and close the window.
- c. Save the OTPK for later so it can be used to join the second node into the cluster.

### Setup Second Node and Join to Cluster

1. Complete all steps in the [Configure Server](#) section for the second node.
2. Complete step one (and step two for BYOL users) of [Configure DxEnterprise Using DxConfiguration Manager](#) for the second node.
3. At the DxConfiguration Manager menu, click **Join Membership**.

Membership Management

Join via NAT Match Agent. Only select this option if you have a valid One-Time PassKey

Target Member

Pass Key

OK Close

- a. NAT join only: If NAT matchmaking was selected in the previous steps, check the **Join via NAT Match Agent** box and skip step b.
  - b. In the “Target Member” field, enter the IP address or hostname of the first node.
  - c. In the “Pass Key” field, type or paste the cluster passkey *or* OTPK if joining via NAT match agent.
  - d. Click **OK** to join the second node to the cluster.
4. Close the DxConfiguration Manager window.
  5. To further configure the cluster, reference some of the following docs:
    - [SQL Server Availability Groups with DxAdmin Quick Start Guide](#)
    - [Azure Load Balancer Quick Start Guide](#)

## References

- [DxEnterprise Admin Guide](#)
- [DH2i Support Portal](#)